

MAUNGARAKI SCHOOL STRATEGIC PLAN 2024 & 2025



Strategic Goal 1	Success Statement	Initiatives
Tūrangawaewae Understand and develop our partnership with our community	We design and deliver initiatives that serve the wider Maungaraki Community, while understanding our cultures, and uniqueness.	<ul style="list-style-type: none"> • Student leadership programmes developed at each level of the school. • Term events show direct interaction with the community, this is evident in team planning. • Connection initiatives run throughout the year. Staff deliver / run an 8 week programme - Choir, Trapping, Sports, Cultural, Whare Purakau which has a direct link to our community. • Develop and run initiatives that foster wellbeing of staff and students. • Have sustainable practices at the heart of decisions made across each level of our school.

NELP

Ensure places of learning are safe, inclusive and free from racism, discrimination and bullying



Strategic Goal 2	Success Statement	Initiatives
Ako Connect students to authentic learning which instils passion and purpose.	Our students are self-aware learners, know the next steps on their learning journey and use their strengths and values to flourish into the future. 93% of students will achieve at or above the curriculum expectations 90% of our students will make expected progress.	<ul style="list-style-type: none"> • All tamariki access a rich curriculum which meets their needs. • Provide coaching to support teachers to implement best practice. • Staff will foster connections with students and whānau to tailor learning that ignites passion for learning.

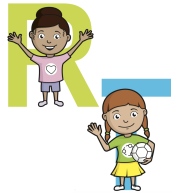
NELP

Have high aspirations for every learner/ākonga, and support these by partnering with their whānau and communities to design and deliver education that responds to their needs, and sustains their identities, languages and cultures

Ensure every learner/ ākonga gains sound foundation skills, including language, literacy and numeracy*



Strategic Goal 3		Success Statement	Initiatives
<p>Pūawaitanga</p> <p>Deliver a curriculum that focuses on creative and diverse learning opportunities.</p>		<p>Our students have access to a range of rich, creative and diverse learning opportunities that enhance their key competencies.</p>	<ul style="list-style-type: none"> • Provide a range of PD opportunities which upskills staff to understand and deliver the refreshed NZ Curriculum. • Review our current local curriculum- alongside experts, and redesign where needed. • Design and deliver learning programmes which meet the creative and hands-on needs of our tamariki. • Create and deliver a Waihanaga programme for our learners which meets their creativity and STEM needs.
NELP	<p><i>Develop staff to strengthen teaching, leadership and learner support capability across the education workforce</i></p>		



Strategic Goal 4		Success Statement	Initiatives
<p>Kaupapa Māori</p> <p>Te Ao Māori is woven into the essence of Maungaraki School, breathing life into our distinctive environment and enriching our cultural context.</p>		<p>We follow and honour our Maungaraki Kawa (Cultural practices) and Tikanga (Cultural principles).</p>	<ul style="list-style-type: none"> • Kura Ahurea into syndicate planning and classrooms. Strong links to weekly programs • Our Way - Kawa - Look at a Kawa for Maungaraki. In line with Iwi expectations and tikanga. Develop and implement these throughout Maungaraki School. • Provide regular and meaningful consultation opportunities for Māori whānau.
NELP	<p><i>Have high aspirations for every learner/ākonga, and support these by partnering with their whānau and communities to design and deliver education that responds to their needs, and sustains their identities, languages and cultures</i></p> <p><i>Meaningfully incorporate te reo Māori and tikanga Māori into the everyday life of the place of learning</i></p>		